

## Diabetes In Cats (cont'd from Page 6)

the body becomes resistant to insulin and more of the hormone is needed to keep blood sugar within the normal limits," she said. "Eventually, the pancreas essentially gives up, and clinical signs of diabetes are evident. Although people with Type 2 diabetes can sometimes be managed with diet and exercise, cats usually need insulin injections. Some cats will go into remission after a few months and no longer need insulin; however, relapse is common."

Signs of feline diabetes include weight loss despite an increased appetite, extreme thirst, and frequent urination. Depending on the severity of the disease, some cats can even become ill with a condition called diabetic ketoacidosis, in which the cat will need intensive care.

There are several risk factors for diabetes, but the most important one is obesity. Cats often live sedentary lives and can become markedly overweight. This puts a lot of stress on the pancreas and can result in diabetes. Other risk factors include a high carbohydrate diet, medications such as steroids, and chronic inflammation of the pancreas, known as pancreatitis.

Though diabetes is a serious disease in cats, there are prevention and treatment methods available. "Talk to your veterinarian about your cat's bodyweight and take action, under medical guidance, if you cat is obese," Cook said. "Cats can have problems with rapid weight loss, so you need to talk to your veterinarian about a safe weight loss plan before making any changes. The type of diet you feed is also important. Most cats should be fed a high-protein, high-fat, and low-carbohydrate diet. Good routine health care, including regular dental cleaning, may also be protective." It is important to note that

## FSA Elections

(continued from Page 2)

programs; emergency programs and eligibility.

Producers must participate or cooperate in an FSA program to be eligible to vote in the county committee election. Approximately 1.9 million producers are currently eligible to vote. Farmers and ranchers who supervise and conduct the farming operations of an entire farm, but are not of legal voting age, also may be eligible to vote.

Farmers and ranchers will begin receiving their ballots the week of Nov. 9. Ballots include the names of candidates running for the local committee election. FSA has modified the ballot, making it more easily identifiable and less likely to be overlooked. Voters who do not receive ballots in the coming week can pick one up at their local FSA office. Ballots returned by mail must be postmarked no later than Dec. 7, 2015. Newly elected committee members and their alternates will take office Jan. 1, 2016.

For more information, visit the FSA website at [www.fsa.usda.gov/elections](http://www.fsa.usda.gov/elections). You may also contact your local USDA Service Center or FSA office. Visit <http://offices.usda.gov> to find an FSA office near you.

#

USDA is an equal opportunity provider and employer. To file a complaint of discrimination, write: USDA, Office of the Assistant Secretary for Civil Rights, Office of Adjudication, 1400 Independence Ave., SW, Washington, DC 20250-9410 or call (866) 632-9992 (Toll-free Customer Service), (800) 877-8339 (Local or Federal relay), (866) 377-8642 (Relay voice users).

## Ladyhorns Defeat Patton Srings, Whiteface

(submitted by Coach Ruby Romero)

The Ladyhorns opened the season with a tough loss against Dimmitt. Getting into foul trouble from the start, we had to look to the bench for playing time. Lilly Ramirez led the Ladyhorns with seven points, followed by Audrey Samaniego and Marissa Godino with six each.

The Ladyhorns faced Patton Springs and Whiteface this

most cats are will require insulin injections to manage their disease, at least in the initial stages.

If you think your cat may be showing signs of diabetes, contact your veterinarian immediately. It is a serious condition but is often successfully managed through a joint effort between you and your veterinarian.

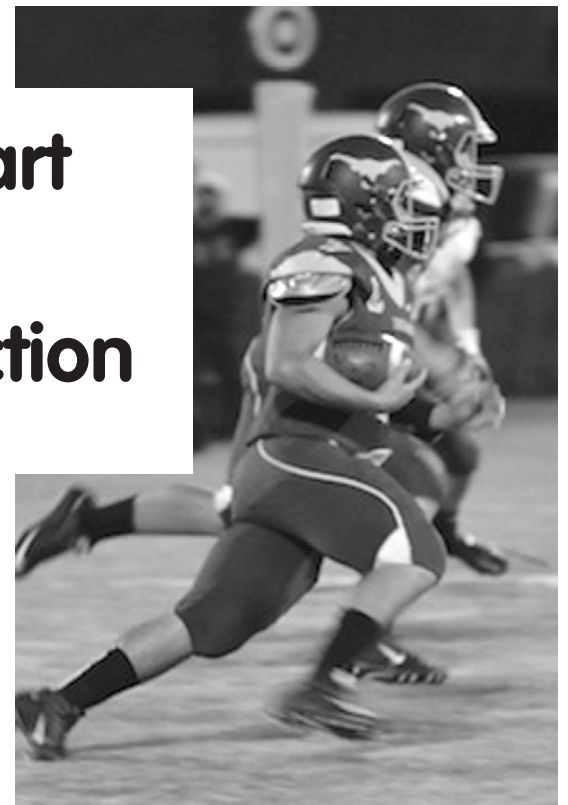
week with two big wins: 40-28 and 62-28, respectively.

Leading scorers were I'lynn Marquez and Lilly Ramirez with 10 each in the Patton Springs game. Against Whiteface, Ramirez had 14 points and Danielle Godino and Esperanza Salazar each had 10.



# THANKSGIVING

## Hart in Action



## HAPPY THANKSGIVING

Wishing you and your loved ones an abundance of good fortune this Thanksgiving holiday.

It's been a privilege and a pleasure to serve you.

**ED HARRIS  
LUMBER  
CO.**

**Brown Crop  
Insurance  
Services, Inc.**

**Hart  
Auto  
&  
Jim  
Black Oil**

